



Enhancing Quality of Technology-Enhanced  
Learning at Jordanian Universities



**Quality assurance aspects in USGM:  
A brief introduction to the  
structure**

Matteo Martini  
Università degli Studi Guglielmo Marconi, Roma.

## UTGM Mission

Marconi's mission is to provide innovative and affordable high-quality degree programs and learning opportunities to both domestic and international students alike, utilizing the latest technologies and responding to students' needs in their pursuit of academic, personal, and professional integrity.

## UTGM Mission

Marconi's mission is to provide innovative and affordable **high-quality** degree programs and learning opportunities to both domestic and international students alike, utilizing the latest technologies and responding to students' needs in their pursuit of academic, personal, and professional integrity.

## Quality Chart

UTGM implements quality at each level through a well defined quality chart working in both top-down and bottom-up mode.

## Quality Chart

The top management level is represented by the “Board of Director”.

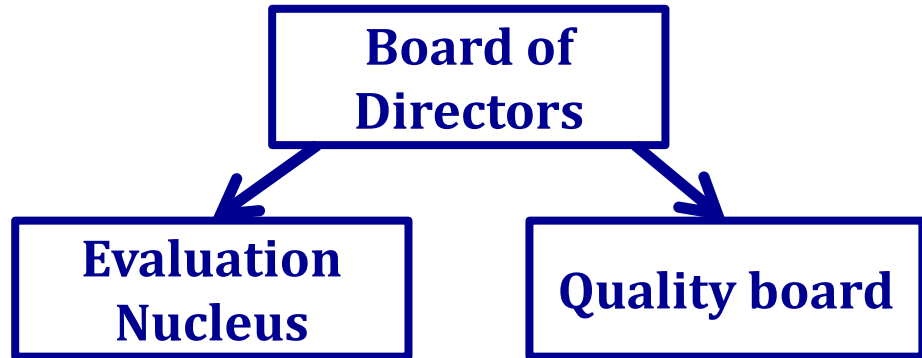
**Board of  
Directors**

Each quality implementation must be approved by the board.

## Quality Chart

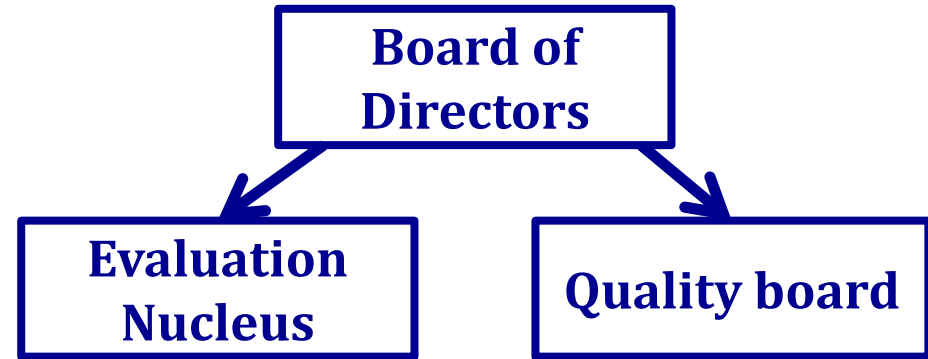
The Board of Directors receives information and gives directives to:

- Evaluation Nucleus (EN)
- Quality Board (QB)



## Quality Chart

The QB is composed by professors and administrative managers of USGM.

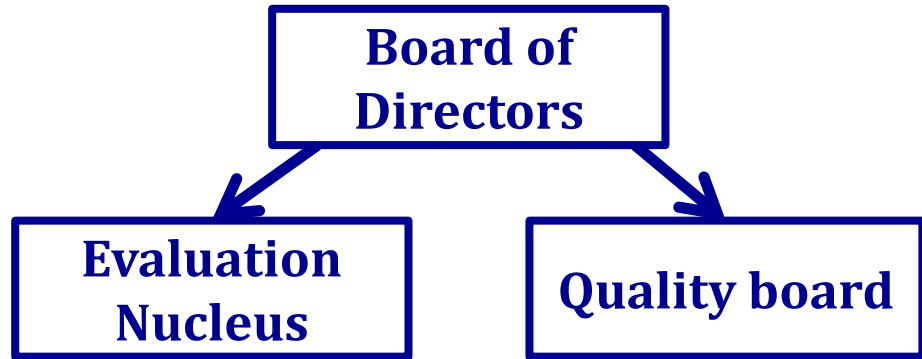


The QB gives guidelines (top-down) and receives data and information (bottom-up) from all quality bodies.

## Quality Chart

The EN is largely composed by members from private and public companies, research institutes and other universities.

The role of the EN is to check the implementation of the quality policy and send yearly a relation to government bodies.



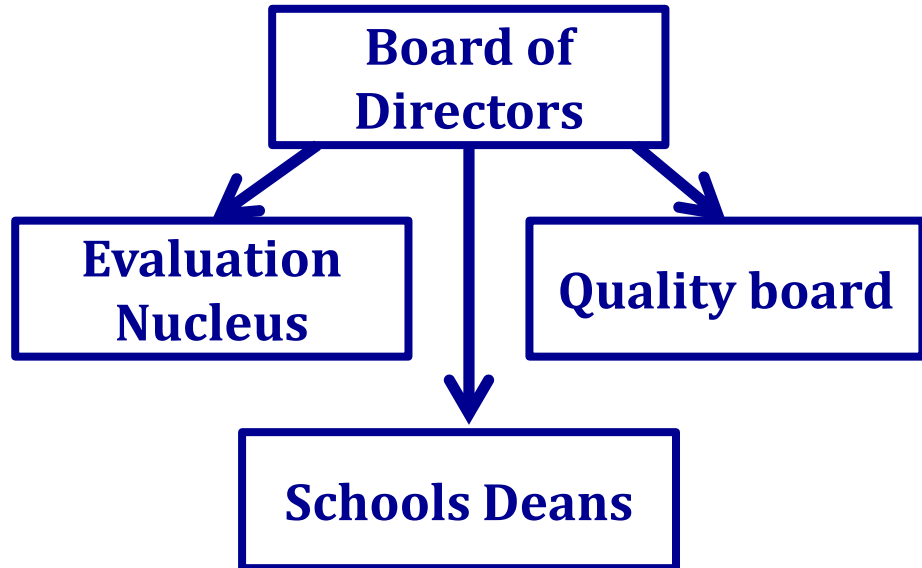


## Quality Chart

In UTGM 6 schools are present:

- Science
- Business
- Educational Science
- Political Science
- Law
- Art

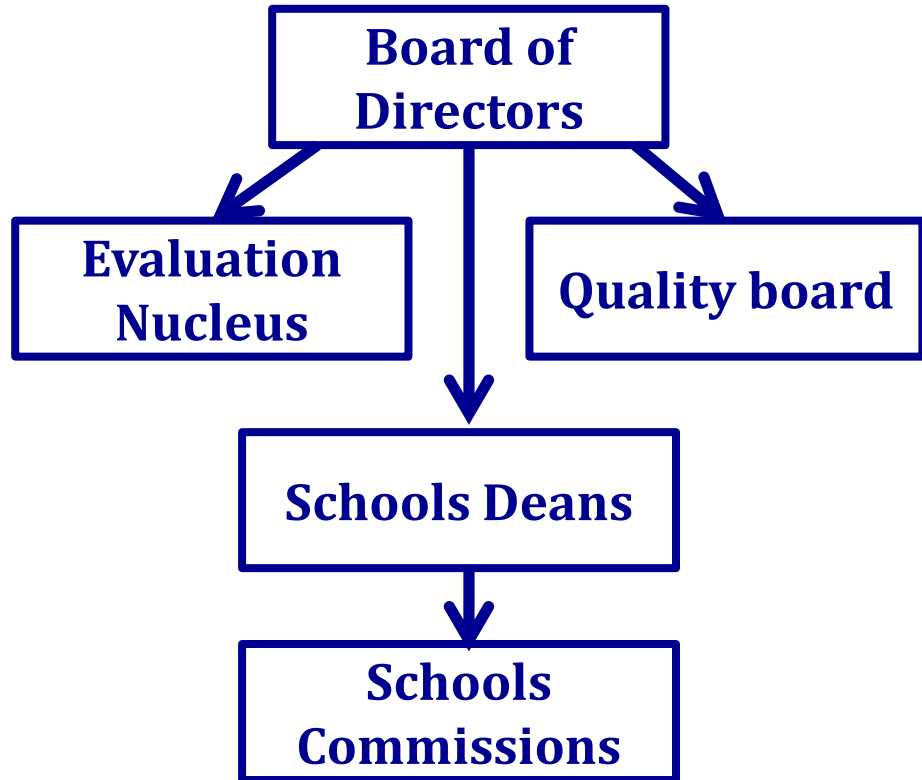
The Dean of each school is the reference figure for the implementation of the quality strategy and policy.



## Quality Chart

For each school a commission formed by instructors is present.

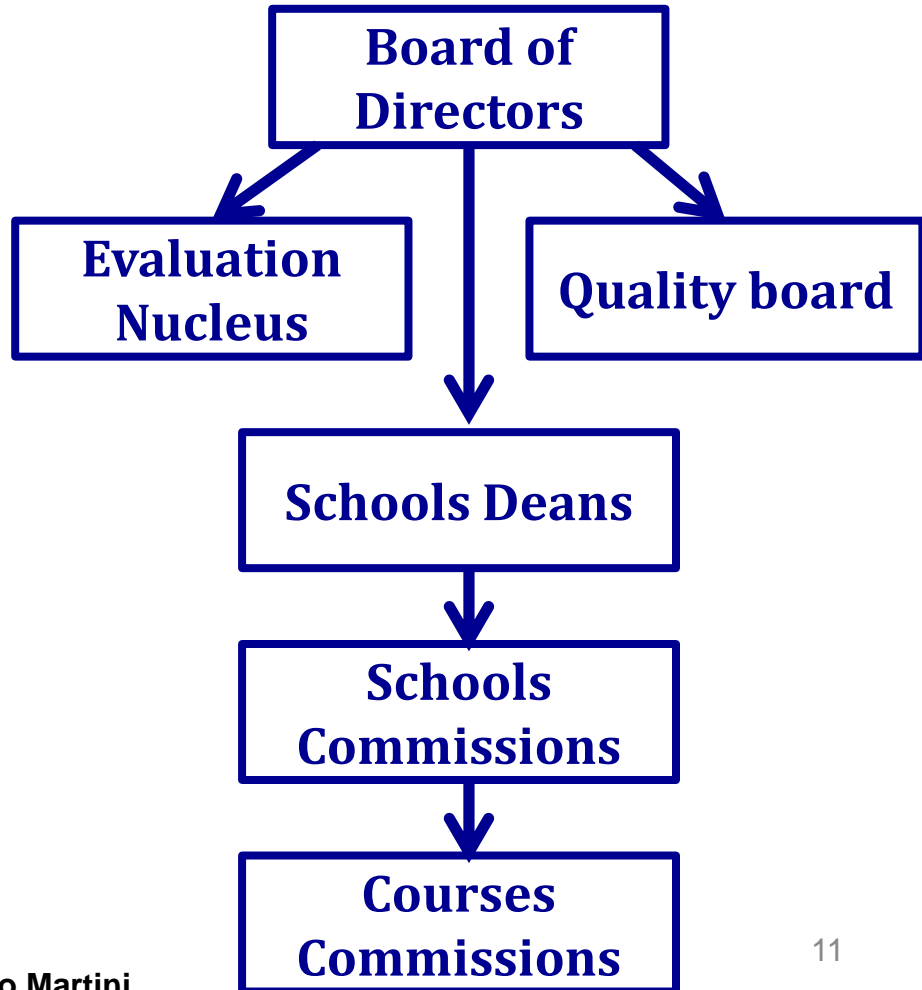
These commissions analyze courses and report information to their dean.



## Quality Chart

Each course has an internal commission formed by instructors.

This commission checks directly the quality of each subject thanks to a direct connection with instructors, tutors and students.



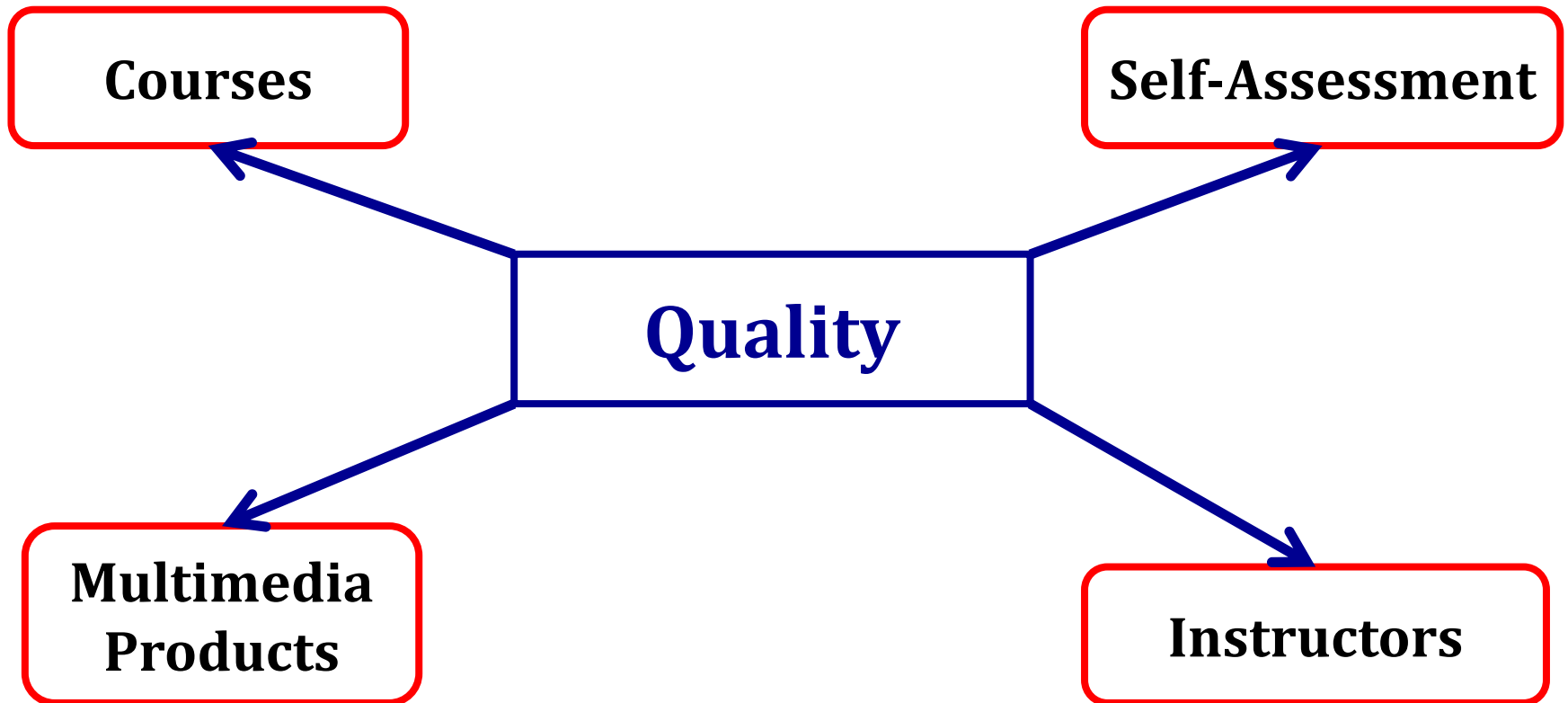
## Talk Layout

Thanks to this organization chart, the implementation of a quality policy is guaranteed at each level.

Never forget that students are the most fundamental litmus test into universities and their opinion drives implementation and re-organization.

In the framework of EqTel this talk is concentrated on four main tasks.

## Talk Layout



# Talk Layout

Talk by M.Fasciani

Talk by M.Martini

